

# BUTTONWOOD

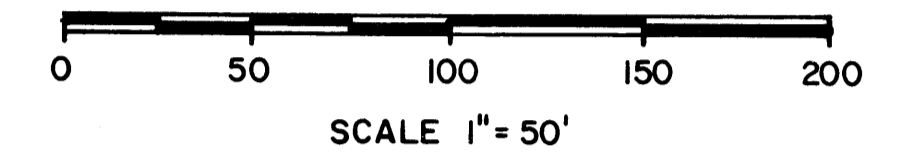
IN SECTION 30, TOWNSHIP 37 SOUTH, RANGE 42 EAST  
MARTIN COUNTY, FLORIDA

SHEET 2 OF 2  
APRIL 1983

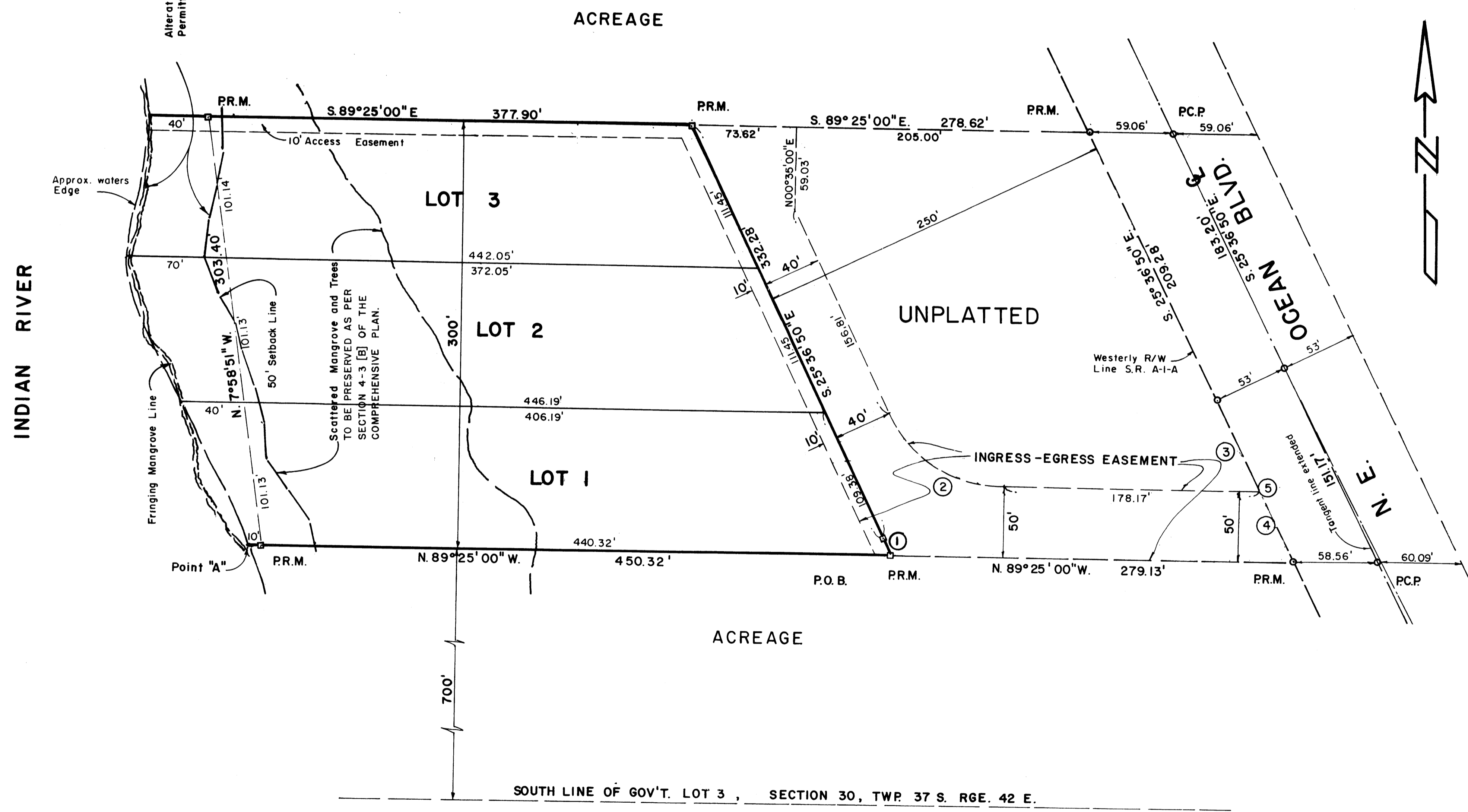
I, LOUISE V. ISAACS, CLERK OF THE CIRCUIT COURT OF MARTIN COUNTY, FLORIDA, HEREBY CERTIFY THAT THIS PLAT WAS FILED FOR RECORD IN PLAT BOOK 9, PAGE 65 OF THE PUBLIC RECORDS OF MARTIN COUNTY, FLORIDA THIS \_\_\_\_\_ DAY OF \_\_\_\_\_, 1983.

LOUISE V. ISAACS, CLERK  
BY: \_\_\_\_\_  
Deputy Clerk

FILE NO. \_\_\_\_\_



Alterations within this area prohibited unless Permitted by the Board of County Commissioners



No.	R	CURVE TABLE		
		A	L	T
1.	17491.80	00°00'24"	2.06	1.03
2.	90.00	63°48'10"	100.22	56.02
3.	17241.80	00°13'50"	69.41	34.70
4.	17241.80	00°11'09"	55.88	27.94
5.	17241.80	00°24'59"	125.30	62.65

NOTES:  
BEARINGS ARE BASED ON THE CENTERLINE OF A1A AS SHOWN ON D.O.T. MAPS DATED 1955.  
THERE SHALL BE NO LOT SPLITS EXCEPT TO CREATE LARGER LOTS.  
ALL ACCESS TO LOTS SHALL BE FROM INGRESS-EGRESS EASEMENT.

SOUTH LINE OF GOV'T. LOT 3, SECTION 30, TWP. 37 S. RGE. 42 E.